



CSA CioCheMangio

Community Supported Agriculture

IST - International School of Turin
Chieri, 22 aprile 2024



We are a Social Promotion Association (APS) that promotes, encourages, and supports the dignity of the individual and the safeguarding of the environment

We tell stories, map and network those who are making a positive difference from the grassroots level, with a focus on environmental sustainability in the area of the Turin Hills, Chieri, Pianalto and Lower Monferrato.

We are supported by around 170 members

OUR PROJECTS



Promoting soft mobility and local economies that respect the environment



A territory promotion magazine



An innovative and sustainable model based on a direct relationship between producers and consumers, with respect for the environment




**The CSA project
was born
because...**

We are what we eat

Ludwig Feuerbach

Man is eating the Earth

Giacomo Pettenati

A photograph of a cornfield with tall green stalks and yellowing tassels, set against a pale, overcast sky. The image is used as a background for the text on the right side of the slide.

In recent decades, food, agriculture and our food traditions have been transformed by the prevalence of industrialised and globalised agri-food systems

The current food system

The industrialised food system is based entirely on **profit** at the expense of social and environmental sustainability



- Long value chains, even global ones
- Separation between producers and consumers
- Concentration of power in the hands of a few economic actors
- Utilitarian conception of natural resources
- Social and territorial inequalities: environmental impacts are global but pressures exerted and benefits obtained are unevenly distributed
- Food waste

A few facts about agriculture

FAO, 2015: 33% of the world's soils are degraded, due to cultivation practices that do not respect regeneration cycles to maximise productivity. It is estimated that the percentage will rise to 90% in the next 30 years.

ISPRA, 2020: pesticides are present in 77.3% of surface water and 32.2% of groundwater. Furthermore, agricultural production is responsible for 70% of global water withdrawals

IPCC, 2019: agriculture is responsible for 23% of global emissions, to which must be added emissions related to the transport and processing of products

Agriculture is also the main cause of biodiversity loss through the destruction, degradation and fragmentation of natural habitats



Through the intensive use of chemicals and heavy vehicles, industrial agriculture destroys fertile soils, compromises biodiversity, pollutes and threatens our health

Around the year

2050

the world population will reach

10 billion

The only way to secure our future is to **return to farming practices that respect Nature**, its rhythms and biological mechanisms

For the transition from industrial agriculture to a more sustainable one, **it is not enough to change production techniques**, but it is increasingly necessary to intervene as well:

- On the way food is obtained
- On our consumption styles
- On the relationship between producers and consumers
- On the relationship between producers themselves

There is a need for a degree of involvement that goes beyond the mere commercial relationship and is based on **collaboration, trust and respect**



WHAT IS CSA

Community Supported Agriculture

An innovative and sustainable model that links agriculture, food, nutrition, and health.

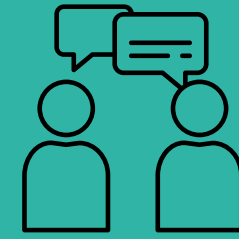
-
- Originating in Japan in the 1970s, it has now spread globally, particularly thriving in the United States, Germany, France, and the United Kingdom.
 - In Italy, notable examples include Arvaia in Bologna, Ortomangione in Siena, and Semi di Comunità in Rome, among approximately 15 others.

Community enables a responsible relationship between people and the food they eat, the land on which it grows and those who cultivate it

CSA Participants

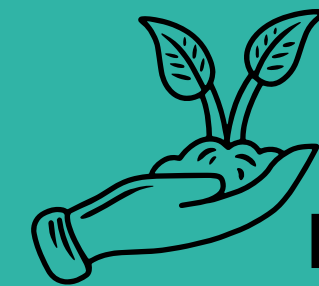
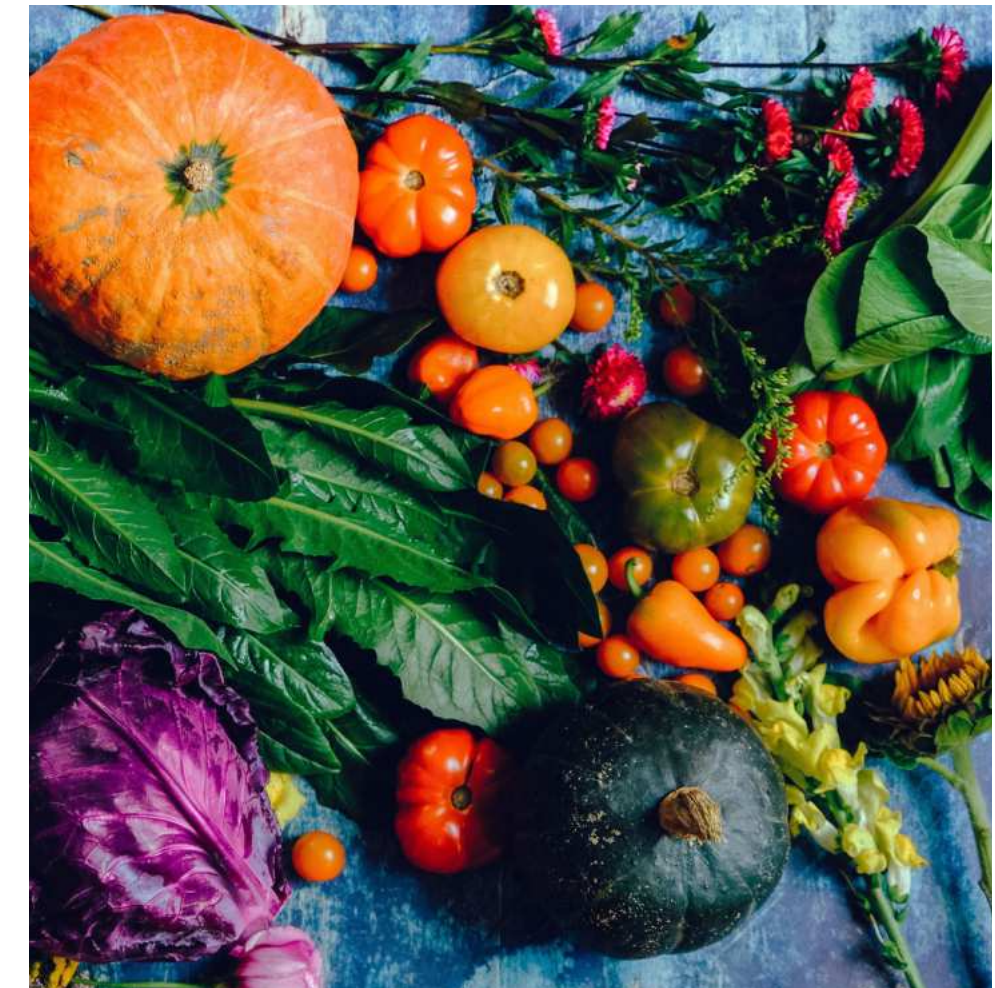


This model is built on a pact between producers and consumers, based on shared rules, trust, and mutual solidarity



Consumers

Directly engage with producers, gaining a deeper understanding of the food production process



Farmers

Are supported by the community, with whom they share both the risks and benefits of production



How does the CSA work?

Consumer members and producers meet to draw up a cropping plan, deciding what, how and when to produce throughout the agricultural year.

This collective decision-making determines each consumer's annual membership fee, which is based on the CSA's operating and production costs.

This fee fairly compensates farmers and supports local solidarity initiatives.

Consumer members receive a weekly basket of seasonal, organic and local vegetables, greens and fruits





CSA production is based on an agroecological approach

- Preservation and increase of soil fertility
- Respect of water resources
- Care and growth of biodiversity
- Improvement and maintenance of the landscape and its characteristics
- Elimination of synthetic chemical substances (pesticides, fertilisers...)
- Use of appropriate technologies
- Cultivation of seasonal products with high organoleptic properties

Agroecology encompasses a set of agricultural practices focused on applying ecological principles to agricultural management to create agroecosystems based on efficiency, resilience and equity.



Benefit from a predictable production environment, with assured sales and fair compensation.



Consumers

Have the opportunity to make informed choices, consuming healthy products with a short supply chain, purchased at a fair and transparent price.

The relationship with the farmers and the rediscovery of the territory in a spirit of solidarity are learning opportunities to promote a more sustainable lifestyle.

Shared planning allows for a seasonally differentiated crop plan, reducing waste

Values and Goals

Social Sustainability

Strengthening and supporting small local agricultural enterprises

Promote cooperation between producers and consumers based on solidarity and participation rather than profit, sharing the risks and rewards of agricultural production

Strengthening community bonds by creating connections, fostering a sense of belonging and promoting social responsibility

Environmental Sustainability

Promoting organic and natural farming and the consumption of wholesome products

Preserving the local area's agrobiodiversity

Shortening the supply chain and reducing transport needs

Eliminating packaging

Minimizing food waste



Community Supported Agriculture

CioCheMangio

Our Journey Thus Far.....



Launched in January 2022, we're now in our third season

Supported by 9 producers and over 60 members from various Turin hill towns

A dedicated coordination team manages CSA operations, while a group of volunteer members handles box preparation and distribution

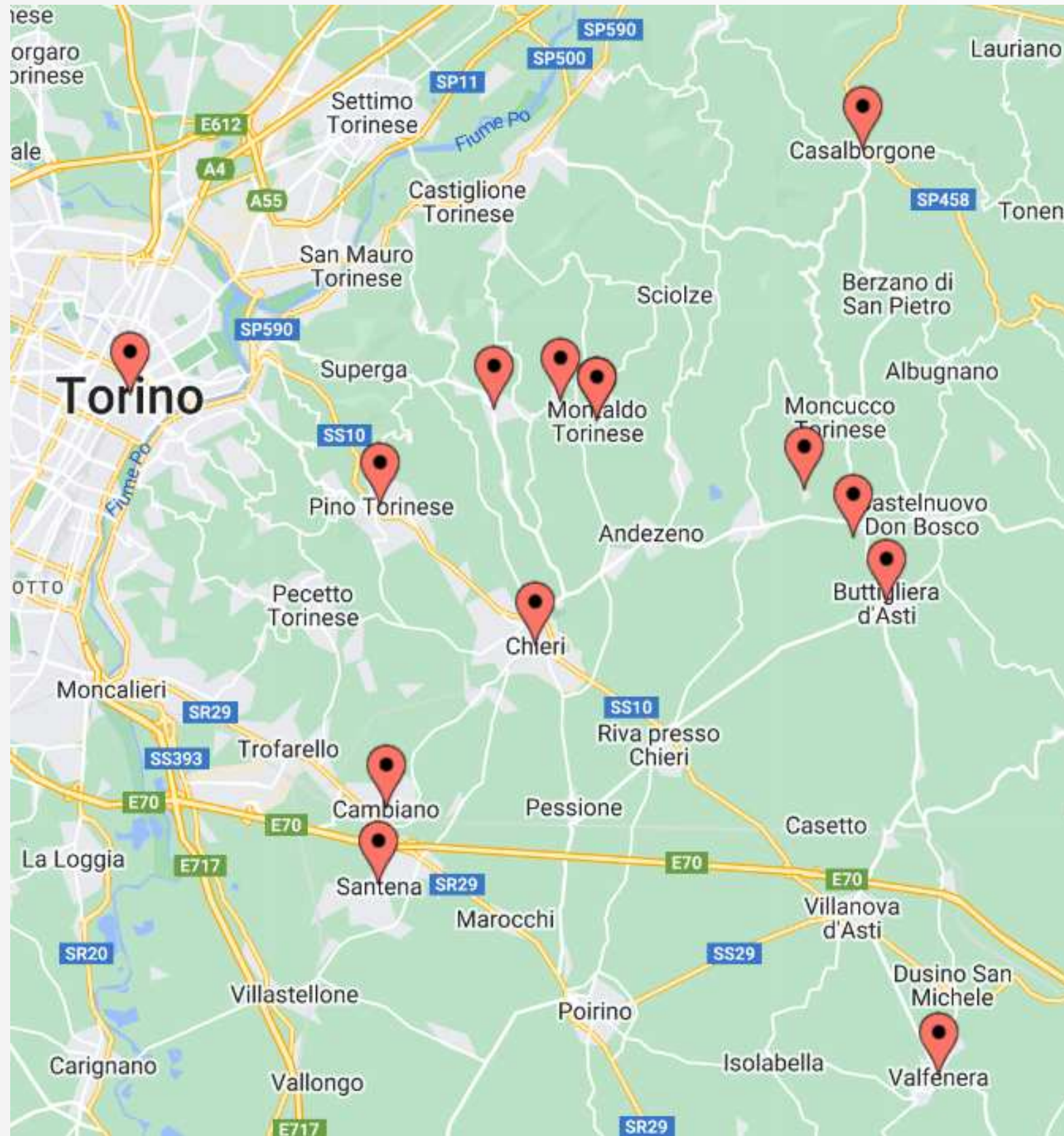
Every Tuesday at Garden le Serre in Chieri:

13:00-14:00: Farmers deliver products

14:00-17:00: Volunteers prepare baskets

17:00-19:00: Members collect their baskets

Our consumer members hail from:



Arignano
Baldissero Torinese
Buttigliera d'Asti
Cambiano
Casalborgone
Chieri
Mombello di Torino
Montaldo Torinese
Moriondo
Pavarolo
Pino Torinese
Santena
Torino
Valfenera



Our producers are located in the Turin hill



La Cascina del Mulino
Villastellone



I Soffioni
Buttiglieria d'Asti



Ghivarello
Pino Torinese



Ceste da Bosco
Nichelino



Esserci
Santena



Pennazio Paolo
Riva di Chieri



Massarone
Montafia



R.A.M.
Moncalieri



Cascina di Maggio
Moncucco Torinese
(solo trasformati)



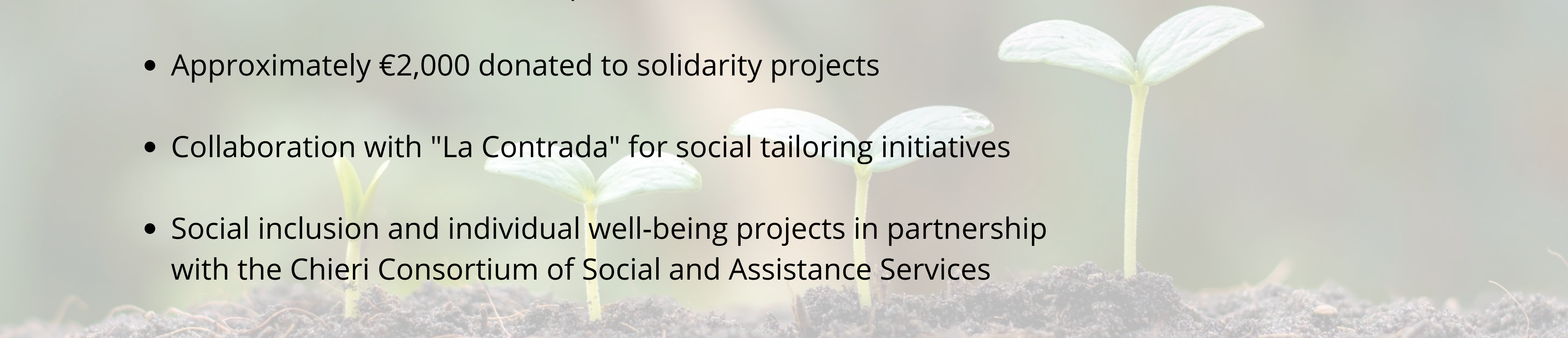
Community Supported Agriculture

CioCheMangio

in numbers:



- From the start of the project to the current season's end: 27,600 kg of unpackaged products distributed in 4,625 boxes.
- 70 baskets of processed products (available on request)
- 9 farm events and 10 town square events
- Approximately €2,000 donated to solidarity projects
- Collaboration with "La Contrada" for social tailoring initiatives
- Social inclusion and individual well-being projects in partnership with the Chieri Consortium of Social and Assistance Services





Community Supported Agriculture

CioCheMangio

The way forward...

We would like to bring the CSA to Turin

To bring the urban population closer to local productions and virtuous agricultural realities present in the surrounding territory

To develop awareness-raising initiatives within the community to promote conscious consumption that respects the individual and the environment

To foster the creation of networks for bottom-up changes and the development of a solidarity-based and participatory economy

We aim to promote the development of a sense of community, even within urban areas, through collaboration with other existing and active entities in different districts



The CSA is not just a box of vegetables

it is a participatory journey, a commitment of many for the benefit of all



Protecting the environment

Sustainable culture and lifestyles

Promoting soft mobility

Enhancing small villages

**Developing solidarity-based and
participatory territorial economy**



Thanks for your **attention**

